



BTM Filters

PTFE Membrane



BTM cartridge and capsule filters are constructed with a Polytetrafluoroethylene (PTFE) membrane and are used for bioburden control in non-aqueous liquids, process gases and tank vent filtration. Pore sizes range from 0.10 to 5.0 μm and filter sizes scale from laboratory to full production using identical materials to ensure consistent results.

These single layer, hydrophobic filters are optimized for flow and throughput, and resist wetting by airborne water droplets, making them ideal for air and gas applications. BTM bioburden control filters protect processes and extend the life of sterilizing filters. Each cartridge module is individually tested using the water intrusion method before it is released from manufacture.

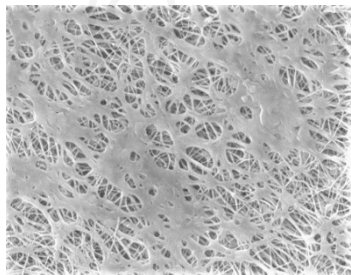
Critical Process provides unrivaled delivery times, technical consulting before purchasing, and very competitively priced high-performance products. Our comprehensive testing & analysis and validation services support your team whenever they need it. Your process experts partnering with our filtration experts is how we deliver your company's solution right the first time.

Bioburden Control

Tank Vent & Process Gas



CARTRIDGES – Nominal Dimensions
Length: 5 to 40 in. (12.7 to 101.6 cm)
Outside Diameter: 2.75 in. (7.0 cm)



BTM bioburden control filters are recommended for:

- Compressed Air
- Pressurized Gases
- Fermentation Air
- Solvents
- Tank Vents



CAPSULES – Nominal Dimensions
Length: 2 to 30 in. (5.1 to 76.2 cm)
Outside Diameter: 3.50 in. (8.9 cm)

Maximum Operating Parameters

	CARTRIDGES	CAPSULES
Liquid Operational Pressure	N/A	80 psi at 68 °F (5.52 bard at 20 °C)
Gases Operational Pressure	N/A	60 psi at 68 °F (4.14 bar at 20 °C)
Operating Temperature (water)	180 °F at 30 psid (82 °C at 2.07 bard)	110 °F at 30 psid (43 °C at 2.07 bard)
Forward Differential Pressure	80 psid at 68 °F (5.52 bard at 20 °C) (Liquid and Gas)	Liquid - 80 psid at 68 °F (5.52 bard at 20 °C) Gas - 60 psi at 68 °F (4.14 bar at 20 °C)
Reverse Differential Pressure	50 psid at 68 °F (3.45 bard at 20 °C)	50 psid at 68 °F (3.45 bard at 20 °C)
Recommended Changeout Pressure	35 psid (2.41 bard)	35 psid (2.41 bard)

Sanitization & Sterilization

Filtered Hot Water*	90 °C (194 °F), 30 minutes, multiple cycles, max 3 psid forward flow	N/A
Inline Steam*	275 °F (135 °C), 30 min, 25+ cycles	N/A
Autoclave*	250 °F (121 °C), 30 min, 25+ cycles	250 °F (121 °C), 30 min, 5+ cycles
Chemical Sanitization	Performed using industry standard concentrations of hydrogen peroxide, peracetic acid, sodium hypochlorite and other selected chemicals.	

*Cartridge Filters – For all elevated temperature procedures above, a stainless-steel support ring is required.

Filtration Area (Nominal)

	CAPSULES	CARTRIDGES AND CAPSULES				CARTRIDGES
Length	2"	5"	10"	20"	30"	40"
	5.08cm	12.7cm	25.4cm	50.8cm	76.2cm	101.6cm
Area	1.2 ft ²	3.3 ft ²	7.0 ft ²	14.0 ft ²	21.0 ft ²	28.0 ft ²
	0.11m ²	0.31m ²	0.65m ²	1.30m ²	1.95m ²	2.60m ²

Integrity Testing

PORE SIZE	BUBBLE POINT MINIMUM*	
	PSIG	BARG
μm		
0.10	21	1.45
0.22	15	1.03
0.45	9	0.62
1.0	6	0.41
3.0	2	0.14
5.0	1	0.07

* Bubble Point for membrane wetted with 60% IPA / 40% water solution.

Construction Materials

Filtration Media	Polytetrafluoroethylene (PTFE) Membrane
Media Support	Polypropylene
End Caps, Center Core, Outer Support Cage, Capsule Housing	Polypropylene
Sealing Method	Thermal Bonding
O-Rings/Gaskets Cartridges only	Buna, Viton® (or FKM), EPDM, Silicone, FEP Encapsulated Silicone, FEP Encapsulated Viton (or FKM)

High Temperature cartridge configuration is available.

Validation

BTM filters are validated using test procedures that comply with ASTM F 838-15(ae1) protocols for the determination of bacterial retention in filters used for liquid filtration. The filters are challenged with the organisms listed below.

0.10µm: *Brevundimonas diminuta*

0.22µm: *Brevundimonas diminuta*

0.45µm: *Serratia marcescens*

Endotoxins

The levels of bacterial endotoxins in aqueous extracts from BTM filters are below current USP limits as specified for water for injection.

Extractables

BTM filters typically exhibit low levels of non-volatile residues.

Toxicity Compliance

The materials used to construct BTM filters are non-toxic and meet the requirements for the MEM Elution Cytotoxicity Test and the requirements for Biological Reactivity Tests in the current version of the United States Pharmacopeia (USP) for Class VI - 121 °C Plastics.

Non-Fiber Releasing

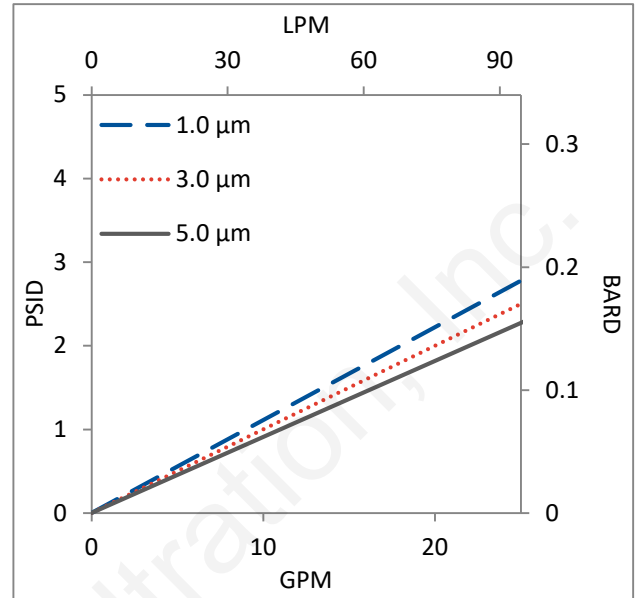
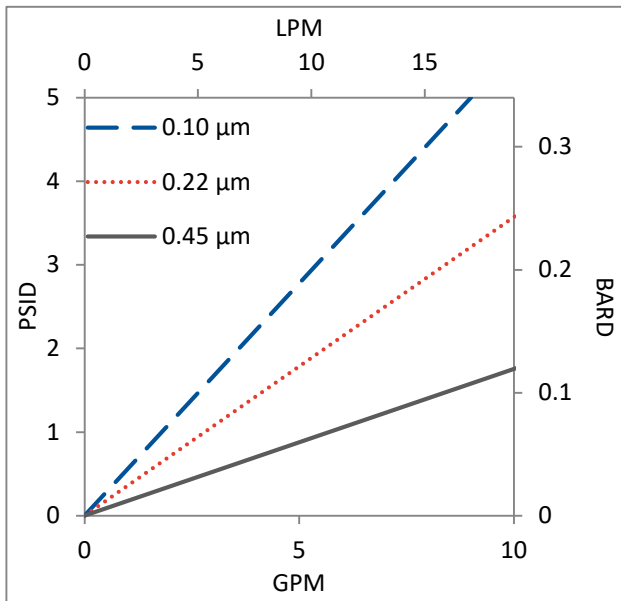
BTM filters comply with Title 21 CFR sections 210.3 (b)(6) and 211.72, for non-fiber releasing filters.

FDA Compliance

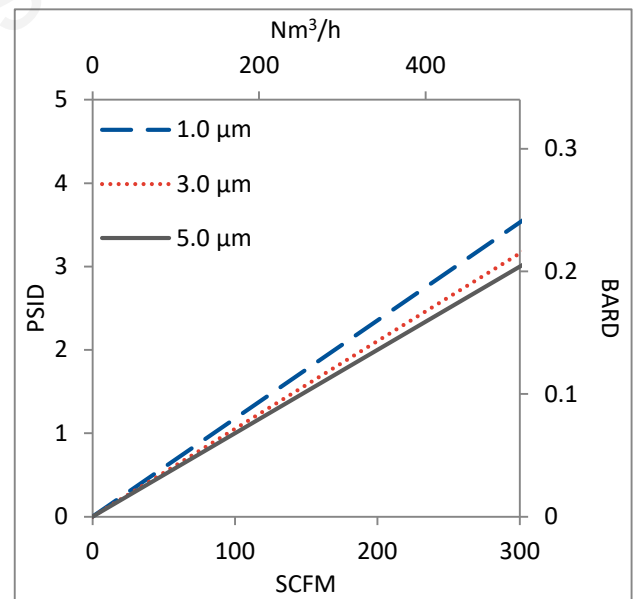
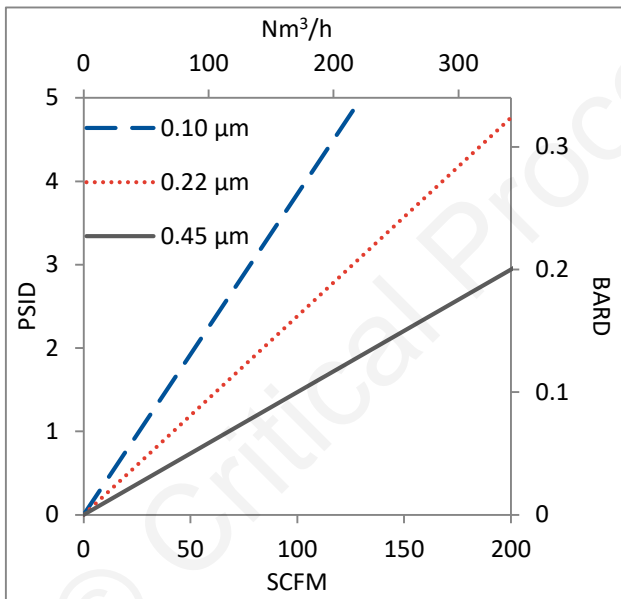
Materials meet the requirements listed by the FDA as appropriate for use in articles intended for repeated food contact as specified in Title 21 CFR sections 174.5, 177.1500, 177.1520, 177.1630, 177.2440, and 177.2600 as applicable.

Flow Rates for BTM Cartridges by Pore Size

Water



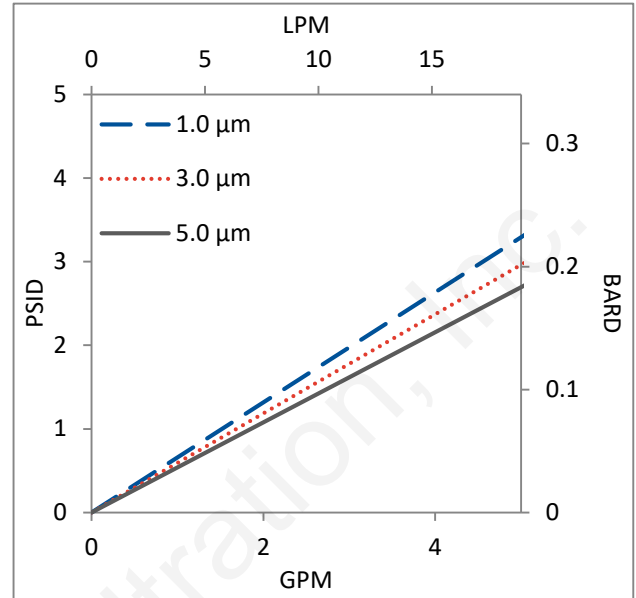
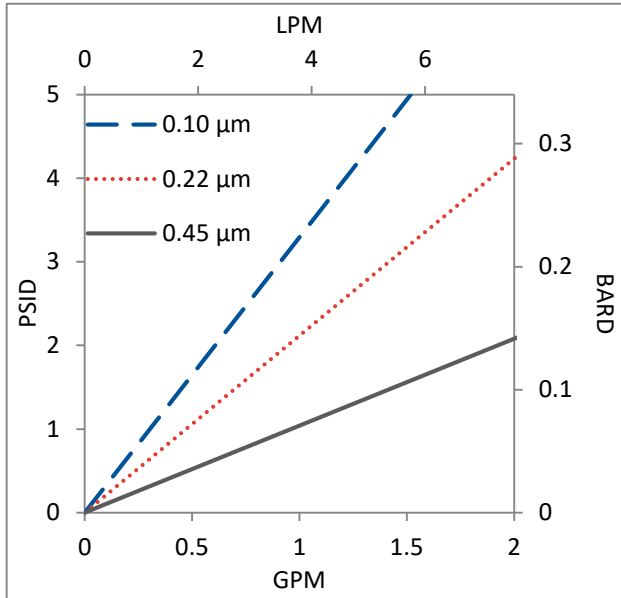
Air



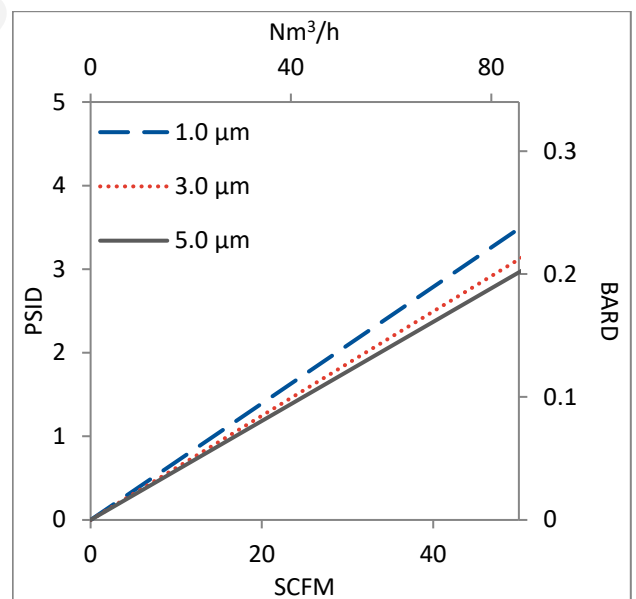
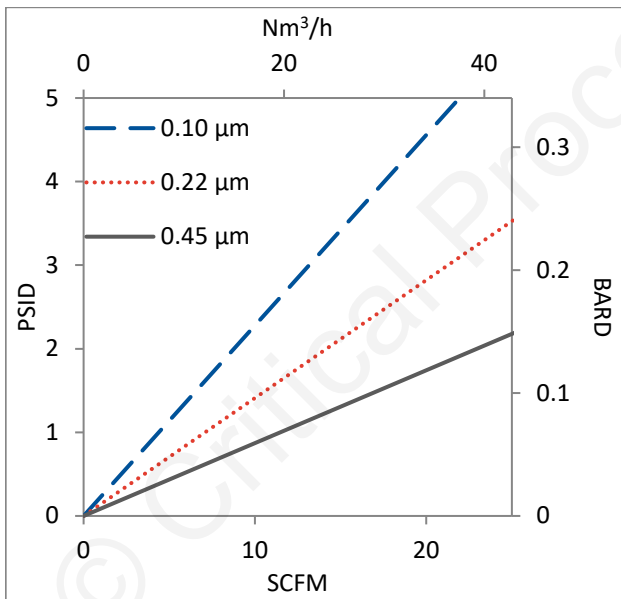
Flow rates for Cartridge filters are per 10-inch length. The test fluid is water or compressed air at ambient temperature.

Flow Rates for BTM Capsules by Pore Size

Water



Air



Flow rates for Capsule filters are tested using a 2" capsule filter with 1" sanitary inlet and outlet ports. The test fluid is water or compressed air at ambient temperature. Flow rates for larger capsules will scale with filtration area. Rates will vary based on end configuration of the capsule.

BTM Filters Ordering Information

Fill in the corresponding codes in the boxes below to build your Part Number.

To consult with one of our technical team members, request a quote or place an order:
call (603) 880-4420 or [contact us here](#).

Cartridge Filters

BTM [] [] 000 [] [] []

Pore Size Code	SS Ring	Length	O-Ring/Gasket Code	End Cap Code*
-10 = 0.10 μ m -20 = 0.22 μ m -40 = 0.45 μ m 1-0 = 1.0 μ m 3-0 = 3.0 μ m 5-0 = 5.0 μ m	S = Ring N = No Ring	05 = 5 in. (12.7 cm) 97 = 9.75 in. (24.8 cm) (DOE only) 01 = 10 in. (25.4 cm) 02 = 20 in. (50.8 cm) 03 = 30 in. (76.2 cm) 04 = 40 in. (101.6 cm)	S = Silicone B = Buna V = Viton (or FKM) T = FEP Encapsulated Viton (or FKM) E = EP R = FEP Encapsulated Silicone	0 = Flat Gasket, DOE 1 = Flat Gasket/Plug 2 = 2-222 O-ring/Plug 3 = 213/119 Internal O-ring DOE 4 = 213/119 Internal O-ring/Plug 5 = 2-222 O-ring/Flat 6 = 2-226 O-ring/Flat 7 = 020 O-ring/Plug 8 = 2-222 O-ring/Spear 9 = 2-226 O-ring/Spear 21 = 2-223 O-ring/Flat 22 = 2-223 O-ring/Spear 23 = 2-222 O-ring 3 Tab/Flat 24 = 2-222 O-ring 3 Tab/Spear 25 = Short 2-222/Plug

*Additional end configurations available

Capsule Filters

CP BTM [] N 000 [] [] [] - [] []

Pore Size Code	Length	Inlet	Outlet	Side Vent Options
-10 = 0.10 μ m -20 = 0.22 μ m -40 = 0.45 μ m 1-0 = 1.0 μ m 3-0 = 3.0 μ m 5-0 = 5.0 μ m	A = 2" B = 5" 1 = 10" 2 = 20" 3 = 30"	A = 1/4" Female NPT B = 1/4" Male NPT C = 3/8" Female NPT D = 1/2" Female NPT E = 1/2" Male NPT F = 1" Sanitary G = Hose Barb* H = 1 1/2" Sanitary with side vent I = 1/2" Single Stepped Barb with side vent J = 3/4" Single Step Barb with Side Vent Y = 3/8" Compression (JACO®) (Top Luer lock vent only) Z = 6mm Quick Disconnect (Top Luer lock vent only)	A = 1/4" Female NPT B = 1/4" Male NPT C = 3/8" Female NPT D = 1/2" Female NPT E = 1/2" Male NPT F = 1" Sanitary G = Hose Barb* H = 1 1/2" Sanitary with side vent I = 1/2" Single Stepped Barb with side vent IB = 1/2" Single Stepped Barb with filling bell and side vent J = 3/4" Single Step Barb with Side Vent Y = 3/8" Compression (JACO®) (Top Luer lock vent only) Z = 6mm Quick Disconnect (Top Luer lock vent only)	1 = Luer Lock 2 = 1/8" Bleed Valve 3 = 1/4" Bleed Valve

O-Rings (Bleed Valves Only)
S = Silicone E = EP V = Viton B = Buna K = FFKM

*Fits hoses/tubes with inner diameter
11/32 to 9/16 inches



One Chestnut Street
Nashua, NH 03060
603.880.4420
FAX: 603.880.4536

CriticalProcess.com

The information contained herein is subject to change without notice. The Critical Process Filtration logo is a trademark of Critical Process Filtration, Inc. Viton is a trademark of DuPont Performance Elastomers L.L.C.
© 2025 Critical Process Filtration, Inc. • All Rights Reserved

Data Sheet BTMDS Rev C